

## Ceramic Systems

Chemco's ceramic systems have been specifically designed using a blend of ceramics and specialised epoxy technologies suitable for the repair and protection of process equipment used in highly abrasive and fluid-flow environments.

### System Benefits

- Solvent-free
- Extremely hardwearing
- Exceptional abrasion and erosion resistance
- Exceptional chemical resistance
- Machinable finish
- Improved efficiency

Application	Coating	Product	Specification
Ambient temperature and mild chemicals	Primer*	<b>RS 500P</b>	100µ of RS 500P
	Ceramic Filler/Putty	<b>RH 500</b>	Fill up the cavities, cracks and pitted areas with RH 500
	Ceramic Topcoat	<b>RP 500</b>	200-400µ of RP 500

Application	Coating	Product	Specification
Medium temperature and aggressive chemicals	Primer*	<b>RE 500P</b>	100µ of RE 500P
	Ceramic Filler/Putty	<b>RT 500</b>	Fill up the cavities, cracks and pitted areas with RT 500
	Ceramic Topcoat	<b>RU 500</b>	200-400µ of RU 500

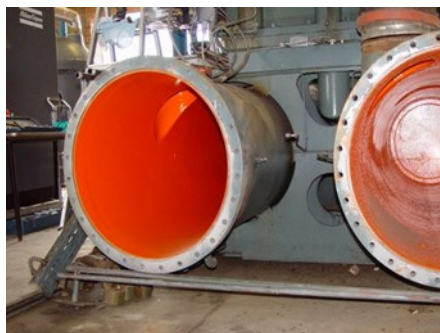
Application	Coating	Product	Specification
High temperature and aggressive chemicals	Primer*	<b>N/A</b>	Fill up the cavities, cracks and pitted areas with RE 900
	Ceramic Filler/Putty	<b>RE 900</b>	
	Ceramic Topcoat	<b>RF 900</b>	200-400µ of RF 900

\*The use of primer is optional and depends on the surface preparation standard. Products can be applied direct to metal if surface preparation standard of Sa 2½ and surface profile of 75µ is achieved.

## System 1: Ambient Temperature and Mild Chemicals



## System 2: Medium Temperature and Aggressive Chemicals



## System 3: High Temperature and Aggressive Chemicals

